



✓
RoHS compliant materials

✓
RoHS reflow soldering capable

MECHANICAL SPECIFICATIONS

- Mechanical rotation angle: $280^\circ \pm 10^\circ$
- Electrical rotation angle: $245^\circ \pm 25^\circ$
- Torque: 0.2 to 3 Ncm. (0.28 to 4.2 in-oz)
- Stop torque: > 7.5 Ncm. (10.5 in-oz)
- Mechanical life*: 10K cycles

* depending on application

FEATURES

- 10K cycles mechanical life
- Endless rotation upon request
- RoHS compliant materials ready
- Carbon resistive element
- Plastic substrate
- Over-moulding manufacturing technique
- SMD mounting
- RoHS reflow soldering capable
- Wiper positioned at 50%
- Both sides cross slot easy adjustment
- Accidental rotor movement protected
- Traceability insured through date code marking

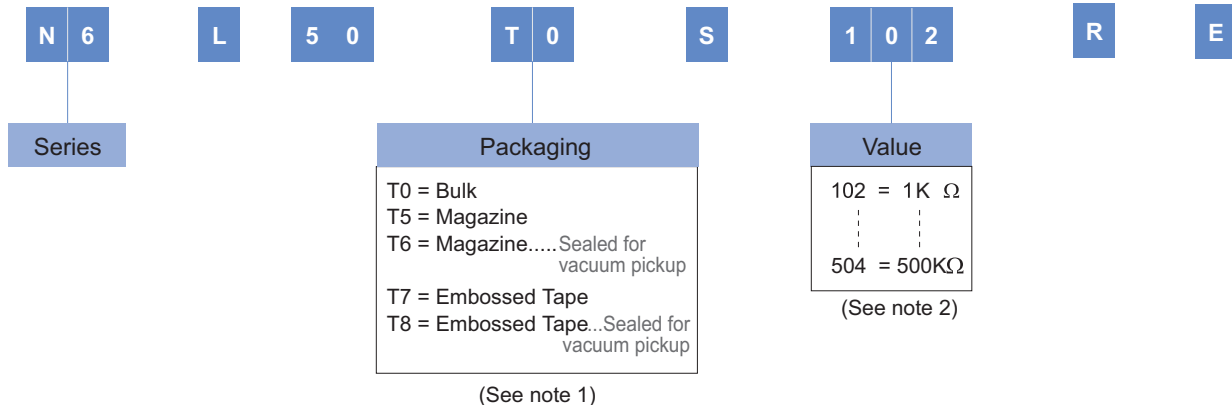
ELECTRICAL SPECIFICATIONS

- Range of values *
 $1K\Omega \leq R_n \leq 500K\Omega$ (1.0 - 2.0 - 2.2 - 2.5 - 4.7 - 5.0)
- Tolerance: $1K\Omega \leq R_n \leq 500K\Omega$ $\pm 30\%$
- Max. Voltage: 100 VDC
- Nominal Power 50°C (122°F) (see power rating curve): 0.1W
- Taper: linear
- Linearity*: 6.5%
- End resistance: $\leq 2\% R_n$ (10Ω min.)
- Equivalent noise resistance: $\leq 5\%$
- Operating temperature**: -25°C to +70°C

* Others upon request

** Up to 85°C depending on application

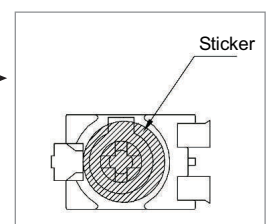
HOW TO ORDER



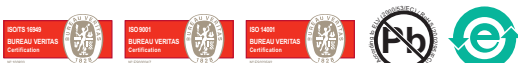
NOTES:

- (1) - "T7", "T8" Embossed Tape 750 Units per Reel. Diameter: 330 mm, aprox. thickness: 30 mm.
- "T6" and "T8" are sealed for vacuum pickup (sticker at the bottom side)

- (2) Value: Example: Code: 10 2 = 1 K
 Number of zeros
 First two digits of the value.

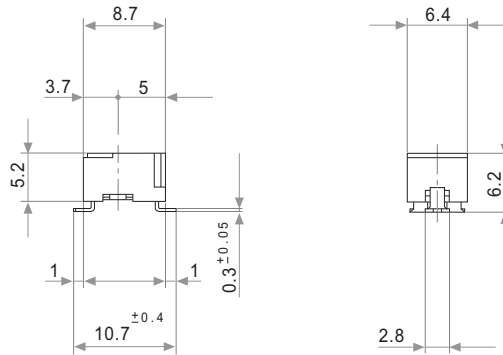


NOTE: The information contained here should be used for reference purposes only.
This project has been financially supported by the Spanish Technological Development Institute (CDTI).

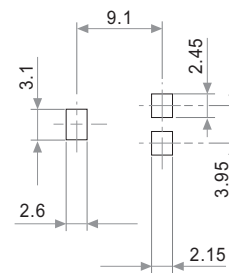


DIMENSIONS

N-6 L 50 T0 S



SOLDER PADS

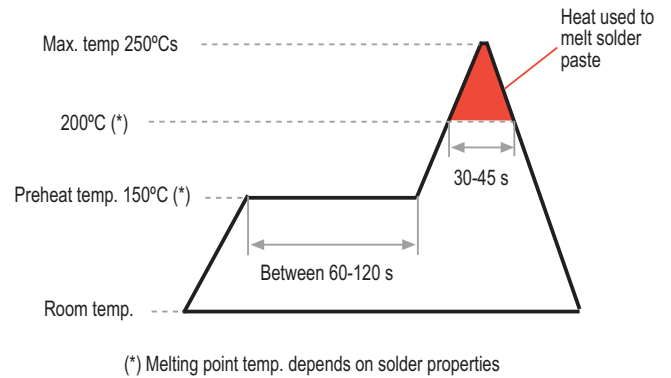
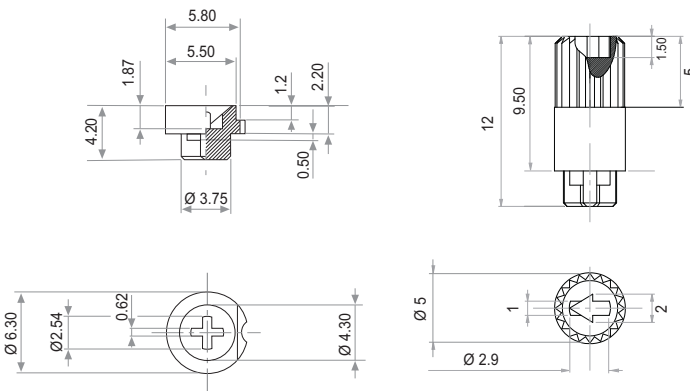


KNOB Ref.: 5680

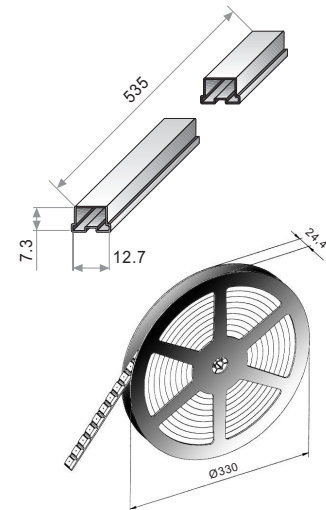
SHAFT Ref.: 6133

RoHS RECOMMENDED REFLOW PROFILE

Please order both Knob and Shaft separately. They should be inserted after the reflow process. If you wish to use your own custom plastic shaft/knob/actuator please contact Piher for advice about compatible materials.



PACKAGING

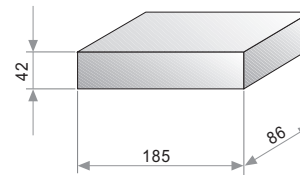


T5 / T6 MAGAZINE

Units per magazine: 80

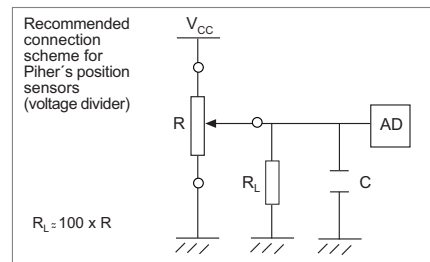
T7 / T8 EMBOSSED TAPE

Units per reel: 750



T0 BULK

500 Units per box.

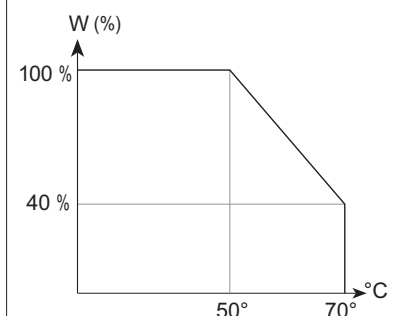


TESTS

TYPICAL VARIATIONS

POWER RATING CURVE

ELECTRICAL LIFE	1.000 h. @ 50°C; 0.1 W	±10 %
MECHANICAL LIFE (CYCLES)	10K @ 30 CPM	± 4% (R _n < 1 M.Ω)
TEMPERATURE COEFFICIENT	-25°C; +70°C	±300 ppm (1K ≤ R _n ≤ 100K)
THERMAL CYCLING	16 h. @ 85°C; 2h. @ -25°C	±5 %
DAMP HEAT	500 h. @ 40°C @ 95% HR	±5 %
VIBRATION (for each plane X,Y,Z)	2 h. @ 10 Hz. ... 55 Hz.	±2 %



NOTE: Out of range values may not comply with these results.