

MAIN FEATURES

- Specifically designed for leadfree reflow soldering processes (excellent performance)
- Carbon resistive element
- Dust proof enclosure
- Self extinguishable plastic UL 94V-0
- Also upon request:
 - Wiper positioned at 50% or fully clockwise.
 - Long life model for low cost control potentiometer applications
 - Mechanical detents
 - Low torque versions

MECHANICAL SPECIFICATIONS

- Mechanical rotation angle: $235^{\circ} \pm 5^{\circ}$
- Electrical rotation angle: $220^{\circ} \pm 20^{\circ}$
- Torque: 0.4 to 2 Ncm.
(0.6 to 2.7 in-oz)
- Stop torque: > 5 Ncm. (>7 in-oz)
- Life*: Up to 10.000 cycles

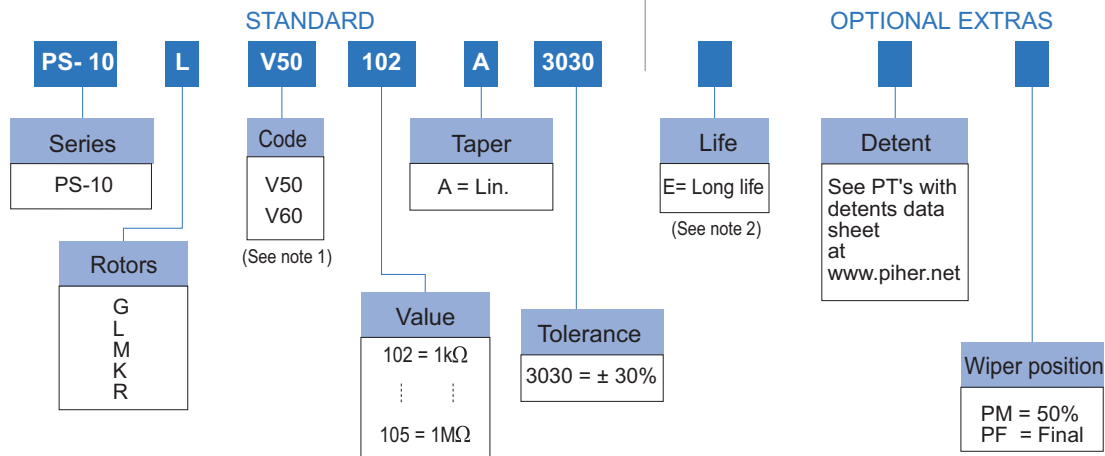
* Others upon request

ELECTRICAL SPECIFICATIONS

- Value (*): 1k Ω to 1M Ω
- Tolerance (*): $\pm 30\%$
- Taper (*): Linear
- Nominal Power: 0.15W @ 50°C (122°F)
- Operating temperature: -40°C + 85°C
- Residual resistance: $\leq 5 \cdot 10^{-3} R_n$
- Equivalent Noise Resistance: $\leq 3\% R_n$

* Others upon request

HOW TO ORDER



NOTES:

- (1) V50: without locating pins
V60: with locating pins
- (2) Up to 10.000 cycles.
Others upon request.

NOTE: The information contained here should be used for reference purposes only.



Information contained in and/or attached to this document may be subject to export control regulations of the European Community, USA, or other countries. Each recipient of this document is responsible to ensure that usage and/or transfer of any information contained in this document complies with all relevant export control regulations. If you are in any doubt about the export control restrictions that apply to this information, please contact the sender immediately.

HOW TO ORDER CUSTOM DRAWING

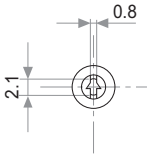
PS-10MV50 + DRAWING NUMBER (Max. 16 characters)

This way of ordering should be used for options which are not included in the "How to order" standard and optional extras.

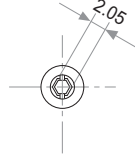
STANDARD OPTIONS

Detents	None
Rotor colour	Dark grey
Housing colour	Dark grey
Wiper position	Initial
Torque	Standard
Life	500 cycles
Packaging	Reel

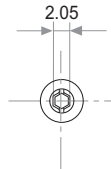
ROTORS



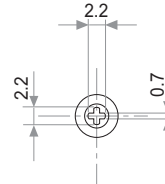
L = Screwdriver thru hole



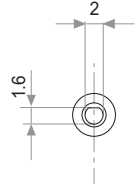
M = Hexagonal thru hole



G = Hexagonal thru hole



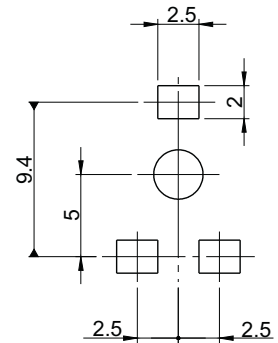
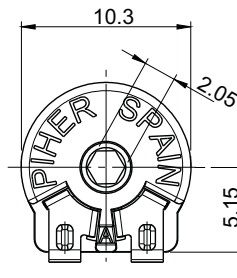
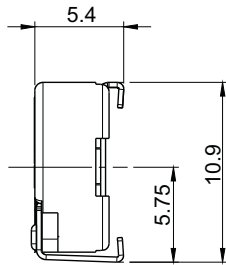
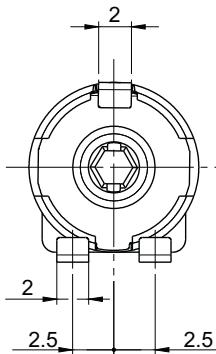
K = Cross slot thru hole



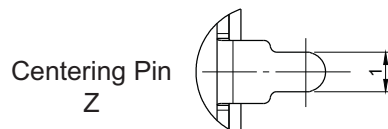
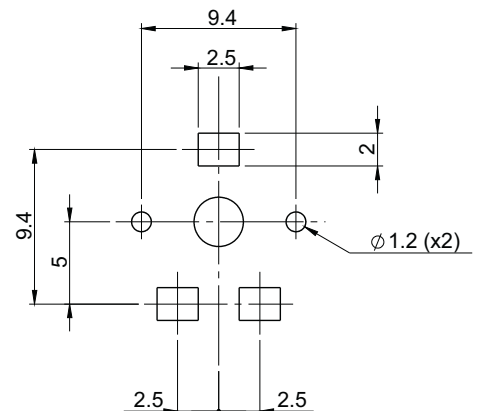
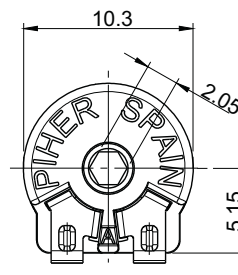
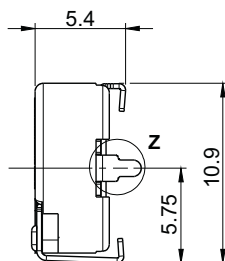
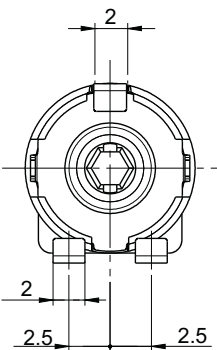
R = thru hole

Note: wipers positioned at 50%

DIMENSIONS - V50

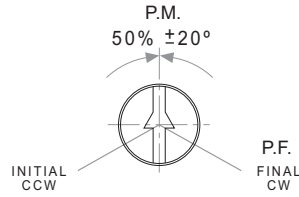


DIMENSIONS - V60

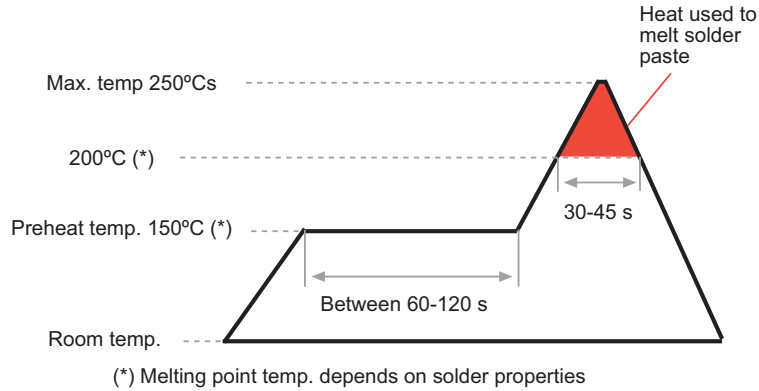


OPTIONS

Positioning (Std. Position = CCW)



RECOMMENDED REFLOW PROFILE



TESTS

TYPICAL VARIATIONS

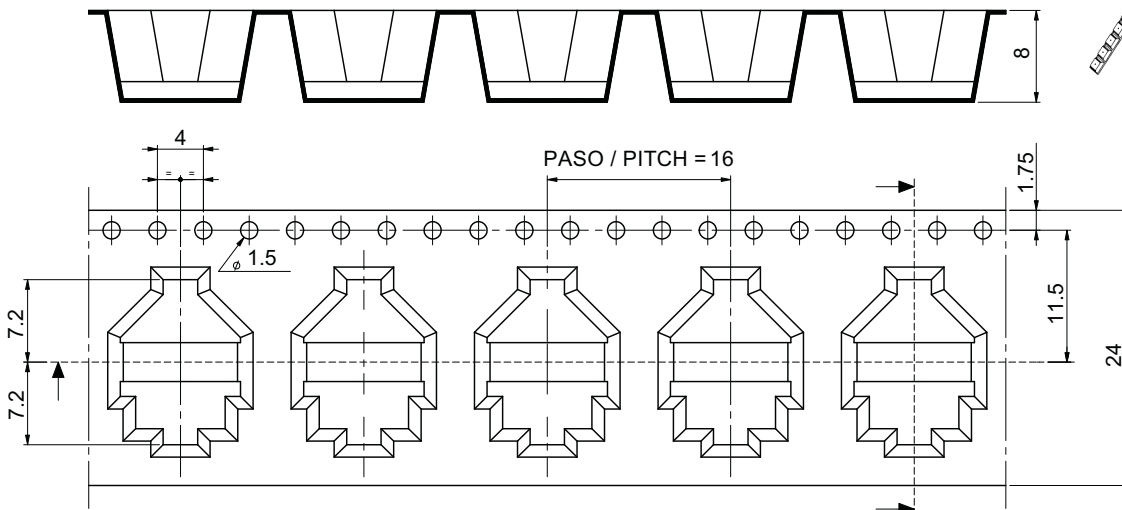
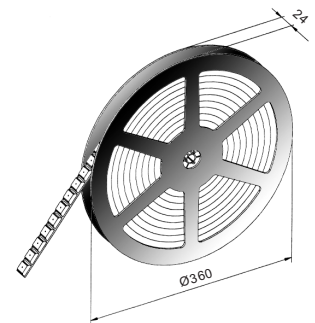
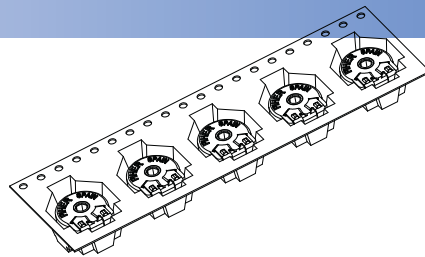
ELECTRICAL LIFE	1.000 h. @ 50°C; 0.15 W	±10%
MECHANICAL LIFE (CYCLES)	500 @ 10 CPM ...15 CPM	±10 %
TEMPERATURE COEFFICIENT	-40°C; +85°C	±1000 ppm
THERMAL CYCLING	16 h. @ 90°C; 2h. @ -40°C	±5 %
DAMP HEAT	500 h. @ 40°C @ 95% HR	±10 %
VIBRATION (for each plane X,Y,Z)	2 h. @ 10 Hz. ... 55 Hz.	±2 %

NOTE: Out of range values may not comply these results.

PACKAGING

EMBOSSED TAPE: 500pcs

BULK: 1000pcs



SHAFTS

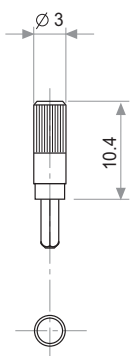


Fig. 1 / Ref. 5016

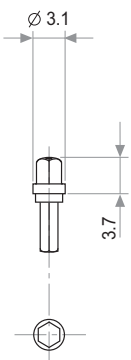


Fig. 2 / Ref. 5053

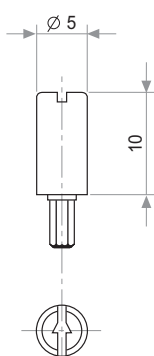


Fig. 3 / Ref. 5012

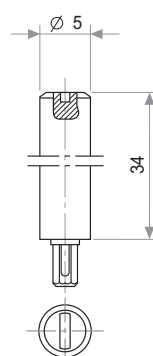


Fig. 4 / Ref. 6053

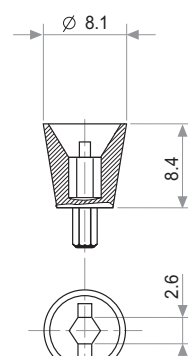


Fig. 6 / Ref. 5035

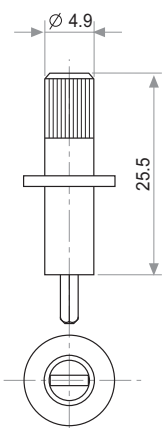


Fig. 7 / Ref. 5115

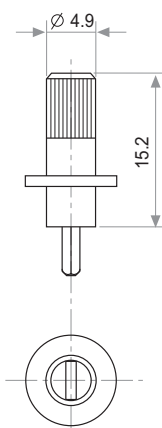


Fig. 8 / Ref. 5116

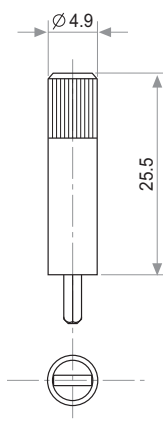


Fig. 9 / Ref. 5119

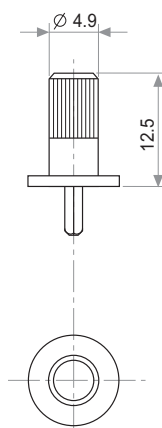


Fig. 10 / Ref. 5120

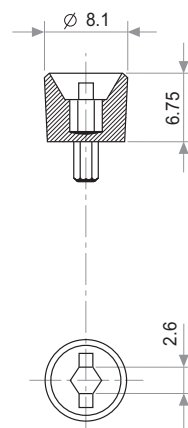


Fig. 11 / Ref. 5027

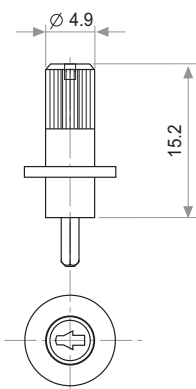


Fig. 12 / Ref. 6052

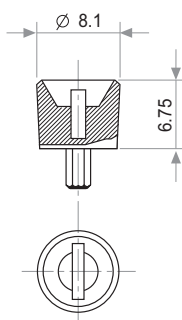


Fig. 13 / Ref. 5121

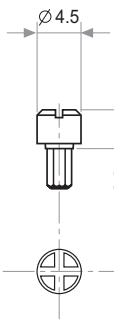


Fig. 14 / Ref. 5055

Shafts and thumbwheels are delivered unassembled

THUMBWHEELS

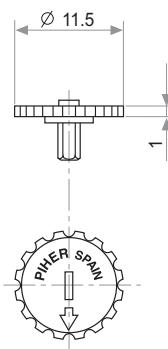


Fig. 5 / Ref. 5034

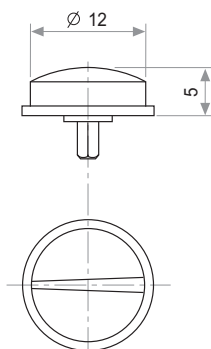


Fig. 15 / Ref. 6008

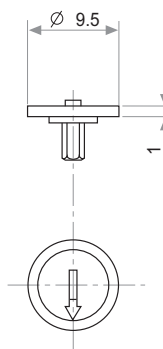


Fig. 16 / Ref. 5039

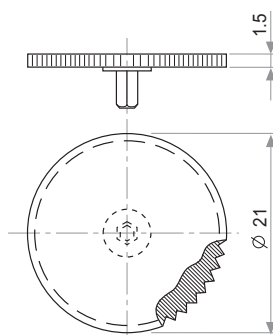


Fig. 17 / Ref. 5062